



SIGNPOSTS FOR PARENTS & CARERS



01

Support with SEND page 3

02

Support with Education page 4

03

Support at Home page 5



TABLE OF CONTENTS

SUPPORT WITH SEND

ADD-vance

ADD-vance is a dedicated group of professionals, who also happen to be parents of children affected by ADHD and/or Autism. Our mission is to support the families of children affected by these conditions and the professionals involved in their care. We want to increase understanding, provide support and change perceptions of these complex neurological conditions, so as to improve the wellbeing and reduce the social isolation of these young people and their families.

[Go to page 6](#)

Respite Care

Various organisations offer respite care for parents/carers.

[Go to page 8](#)

Sensory Resources

[Go to page 9](#)

North Herts CVS Holiday Club

School holiday playscheme for children and young people with complex health needs.

[Go to page 12](#)

Neurodiversity Handbook

The Neurodiversity Handbook has useful resources, support and signposting on a whole range of things relating to Neurodiversity.

[Link to handbook](#)

Angels Support Group

Angels supports families of autistic children and/or children who have ADHD (and those awaiting diagnosis). All Angels staff are parents of neurodivergent children.

[Go to page 7](#)

ABLEize

Browse through this busy Hertfordshire section of ABLEize to find details of disabled groups, clubs and organisations as well as sports and recreational activities, social clubs and meetings for all disabilities.

[Go to page 9](#)

Hertfordshire SEND Local Offer

The Local Offer lets parents and young people know what special educational needs and disabilities services are available in Hertfordshire, and who can access them.

[Go to page 10](#)

SPACE

Hertfordshire based charity supporting families of children and young people who are neurodivergent.

[Go to page 11](#)

Hertfordshire Neurodiversity Support Offer

[Go to page 12](#)

[Click here to return to the contents page](#)



SUPPORT WITH EDUCATION

EHCP Information

Information and links about the EHCP assessment and review processes for parents.

[Go to page 14](#)

DSPL1

DSPL is a Hertfordshire-wide partnership approach where parents, carers, staff in early years settings and schools, further education colleges, local authority officers and representatives from other agencies, work together as part of an Area Group, to ensure that there is a range of provision and support services available in their local community.

[Go to page 17](#)

SLCA Team (Speech, Language, Communication & Autism)

This team provides specialist advice and intervention for children and young people with autistic spectrum conditions and/or speech, language and communication difficulties.

[Go to page 18](#)

Herts Sport Partnership & HAPpy Camps

Working collaboratively to improve the lives of the people in Hertfordshire, by using the power of sport and physical activity to tackle inequality.

[Go to page 21](#)

Alternative Provision

[Herts: page 22](#) [Beds: page 27](#)
[Camb: page 31](#) [Essex: page 36](#)

ASD Provision Mapping

[Go to page 19](#)

NHPSS

North Herts Primary Support Service is a commissioned service providing SEMH support for pupils in Letchworth, Baldock and Royston partnership areas.

[Go to page 15](#)

HPOSS

Hitchin Primary Outreach Support Service covers primary schools in Hitchin and the surrounding villages.

[Go to page 16](#)

Guide to Exclusions

A guide for parents of children with SEND about exclusions, suspensions and other attendance issues.

[Go to page 19](#)

Nessie

We provide mental health support for children and young people.

[Go to page 20](#)

[Click here to return to the contents page](#)

SUPPORT AT HOME

<p>Citizens Advice We can all face problems that seem complicated or intimidating. At Citizens Advice we believe no one should have to face these problems without good quality, independent advice. Go to page 42</p>	<p>School Partnership Family Support Workers Baldock, Hitchin, Letchworth and Royston Partnerships provide family support services to schools in these towns and the surrounding villages. Family support workers work alongside families giving practical support and user friendly parenting strategies. Go to page 43</p>
<p>Intensive Family Support Teams (IFST) The Intensive Family Support teams work with families with multiple and complex needs who would benefit from intensive support. Go to page 44</p>	<p>Hertfordshire Family Centre Service We're here to support children, young people, their parents, families and carers. Go to page 45</p>
<p>Home-Start Home-Start is a local community network of trained volunteers and expert support helping families with young children through their challenging times. Go to page 46</p>	<p>Housing Information on how to get support with housing. Go to page 47</p>
<p>SASH Specialist adolescent service Hertfordshire Go to page 48</p>	<p>Capa First Response We support families and professionals impacted by child or adolescent on parent abuse. Go to page 49</p>
<p>Herts Children & Young People's Mental Health Service Directory Go to page 50</p>	<p>Stand-by-me We work with bereaved children, young people (aged 18 and under) and their families in North Herts & Stevenage. Go to page 51</p>
<p>Safe Space Therapeutic support for children and young people via counselling, arts therapy & mentoring Go to page 52</p>	<p>Just Talk Young people's emotional wellbeing information and signposting to help in Hertfordshire. Go to page 53</p>
<p>Hertfordshire Mind Network We work across Hertfordshire to support positive mental health and wellbeing. Go to page 55</p>	<p>The Living Room Young people's emotional wellbeing information and signposting to help in Hertfordshire. Go to page 54</p>
<p>Safer Places Supporting adult & child survivors of domestic abuse across Essex and Hertfordshire. Go to page 56</p>	<p>RISE The 'Positive Relationships' Child to Parent Violence Programme is an evidence-influenced, Non-violent Resistance (NVR) intervention that aims to enhance the protection and safety of all family members. Go to page 58</p>
<p>Mediation Hertfordshire Go to page 57</p>	



SUPPORT WITH SEND

ADD-VANCE

ADD-vance

The ADHD and Autism Trust

Parents & Carers

Here at ADD-vance we are passionate about supporting families. This is because we all live in a family with members affected by ADHD, Autism or a related condition. In our opinion, nobody understands living with additional needs more than the parents who have walked the walk, not just talked the talk. This is why all our trainers, coaches and most of our admin staff are parents or carers of children or young people with ADHD, Autism or a related condition. We know that sometimes we all just need a helping hand, whether that be a simple chat to another parent in the same position or something a bit more structured, like a few sessions with a professional and understanding coach. We offer a range of services throughout Hertfordshire aimed at helping parents and carers to understand and support these complex conditions.

Assessment Project

We are excited to announce that The Assessment Team have teamed up with ADD-vance to provide free ADHD (Attention Deficit Hyperactivity Disorder) or ASD (Autism Spectrum Disorder) assessment for children in Hertfordshire who are in primary school years 5 & 6 and are eligible for free school meals. [Click here for more information.](#)

Support

Support Groups for parent carers are currently running online via Zoom. [Click for more information.](#)

Training

ADD-vance runs both online workshops and online and face to face six week courses. [Click for more information.](#)

Join the conversation

ADD-vance runs multiple Facebook groups to provide information and support to parent carers. [Click to find out more.](#)

Coaching

ADD-vance has a team of highly experienced, trained coaches for when focused 1:1 family support is what is needed. [Find out more.](#)

Additional support

Want to find out who else us offering support to parents and carers? [Click for lots of additional sources of information and support.](#)

Browse our library

If a little extra detail is what you're after you might be interested in one of the [many books in our library](#), available for a refundable deposit.

[Click here to return to the contents page](#)



SUPPORT WITH SEND

ANGELS SUPPORT GROUP



Angels provides individualised, professional expertise and advice for the families of children with Attention Deficit Hyperactivity Disorder (ADHD) and/or Autism. We work alongside parents to build understanding and to empower them to hear their child's voice. Our key aim is to maximise the individual potential of each child and young person. We were formed by, and are led by parents whose children face similar challenges.

We provide:

- Parent support group meetings during the day time in Stevenage and virtually over Zoom.
- Four evening support group meetings a term over Zoom.
- Information, Advice and Strategies on ADHD and Autism.
- Speakers and Workshops relating to ADHD and Autism.
- Support group sessions led by a facilitator – chat with other parents and share ideas and experiences.
- One-to-one service to support you in a personalised way with any issue around your child/young person's conditions, including support with meetings and forms.
- Website and Facebook page plus a private moderated Facebook group just for members.



COMMUNITY FUND www.angelssupportgroup.org.uk

Registered Charity No. 1117059

Do you feel that you would benefit from meeting with other parents/carers of children with ADHD or Autism?

If so, why not join Angels?

Who is it for?

Parents and carers of children with a diagnosis of ADHD and/or Autism, or who are being assessed for the above conditions.

How much will it cost?

Membership of Angels is free, but we are always grateful to receive donations from members when they access our services.

How do I join?

Complete the membership form available on our website. We will then send you a welcome email and our latest programme confirming you are a member.

When can I attend?

Once you are a member you can access any of our events or meetings.

For further details please contact:

The Angels Team

Web: www.angelssupportgroup.org.uk

Email: info@angelssupportgroup.org.uk

Tel: 01462 685150

Note for Professionals:

If you are a professional working with families with members who have ADHD/Autism and would like to learn more about Angels, then please contact The Angels Team to arrange to visit the group.

For full details of our services please visit our website at:
www.angelssupportgroup.org.uk

www.angelssupportgroup.org.uk

[Click here to return to the contents page](#)

SUPPORT WITH SEND

RESPITE CARE

Herts Parent Carer Involvement

Getting help with Social Care

Social care in Hertfordshire is made up of the following:

Short Breaks

Short breaks offer disabled children and young people the chance to spend time out with others socialising and doing fun activities, giving their families a break and providing them with the confidence their child is well supported by a trained worker.

Direct Payments

After an assessment, some families may receive direct payments. This is money given to a parent of a child with a disability, or to a young person with a disability aged 16 or 17. This allows you to pay directly for support.

Shared Care

This is family-based care that provides short breaks to Disabled Children and Young People from 4-18 years of age. Carers are from a wide variety of backgrounds and can be individuals or couples, male or female, with or without children and may have pets, some carers work others may be retired.

Residential care

Some young people with disabilities and complex health needs may be eligible for a residential short break especially if they require support throughout the night.

[Click here for more information](#)

Breakaway Playschemes

We provide short term respite for parents and carers of children with additional needs.

[Click here for more information](#)

Carers in Herts

Our Carer Engagement Workers focus on engaging with carers who are looking after someone with the following needs:

- Older People aged 65 and above
- Adults with dementia
- Parents caring for someone aged up to 25 with Special Education Needs and Disabilities (SEND)
- Adults with a learning disability
- Adults with a physical disability
- Adults with an Autism Spectrum Condition
- A young person under 18 or adult with mental health
- Adults who misuse drugs or alcohol or in treatment or recovery from substance misuse
- And work with Gypsy, Roma and Traveller communities in Hertfordshire

[Click here for more information](#)

Anwell View Respite & Hospice Care

Shared Care

This scheme has been running successfully for several years. social workers introduce parents to families who are willing to have a child with severe learning difficulties join their family for a day, weekend or longer period. Parents interested in the scheme should ask for details from either the headteacher or their social worker.

Direct Payment Carers

Social care packages may include direct payments which allows parents/carers to employ a carer to support their child to activities or clubs in the local community which offers some respite.

[Click here for more information](#)

[Click here to return to the contents page](#)

SUPPORT WITH SEND

SENSORY RESOURCES

Sensory Resources

"Children with special educational needs and disabilities (SEND) greatly benefit from sensory play as it aids in the development of various skills. Providing appropriate sensory stimulation can improve concentration, focus, and self-occupation while enhancing muscle tone and playing ability." (specialeducationalneedsanddisabilities.co.uk)

The following link will take you to a Google drive folder. You will find information on sensory advice, resources equipment, checklists and guidance for sensory play/circuits at home: [Sensory resources](#)

[Click here to return to the contents page](#)

SUPPORT WITH SEND

ABLEIZE

ABLEize

Hertfordshire and Herts Disabled Support Groups and Clubs

Browse through this busy Hertfordshire section of ABLEize to find details of disabled groups, clubs and organisations as well as sports and recreational activities, social clubs and meetings for all disabilities. Includes wheelchair users groups, stroke clubs, deaf, blind, special needs and learning disabilities located in Herts and Hertfordshire including Bishop's Stortford, Hemel Hempstead and Welwyn Garden City.

For full details please visit:
www.ableize.com

[Click here to return to the contents page](#)

SUPPORT WITH SEND

THE HERTFORDSHIRE SEND LOCAL OFFER

The Hertfordshire SEND Local Offer

If you're new to SEND then knowing where to start finding support can be overwhelming. Your child may have just been diagnosed with SEND, or may be in the process of being assessed. Or perhaps you've just started to notice that your child or young person is developing, behaving, or learning differently to their peers. The Local Offer website gives you the right information at the right time to support you and your family.

Popular on the Local Offer:

**Hertfordshire
Additional Needs
Database (HAND)**

Short Breaks

**Find courses, events
and things to do**

**Find learning
resources and fun
activities**

Support with education

The educational support your child is entitled to, types of education and how to access learning if your child can't get into school.

Courses and activities in Hertfordshire

Find courses, clubs and activities for you and your family, and short breaks and childcare too.

Services for children and young people (ages 0 - 25)

From doctors and dentists to more specialist support for complex needs.

Services for parents, carers and families

Organisations who support parents, carers and families of children with SEND in Hertfordshire.

Money

Financial support you can apply for yourself, money advice, and funding professionals can get too.

Education, health and care plans (EHCP)

If SEN support isn't enough, then an Education, Health and Care Plan might be the next step.

Early years (ages 0 - 5)

Help available in the early years, including health visitors and family centres.

Preparing for adulthood

Thinking about your child's future early can help to relieve some of the worries you might have. Advice on how you and your child can prepare.

Feedback

Find out how you can shape SEND services, or what to do if you're not happy.

Contact a SEND service

Information on how to contact a SEND service and details of their Advice Lines

For full details please visit:
**[https://www.hertfordshire.gov.uk/
microsites/local-offer/the-
hertfordshire-local-offer.aspx](https://www.hertfordshire.gov.uk/microsites/local-offer/the-hertfordshire-local-offer.aspx)**

[Click here to return to
the contents page](#)

SUPPORT WITH SEND

SPACE

Supporting neurodiverse families

We are an award winning Hertfordshire based charity supporting families of children and young people who are on the Autistic Spectrum (ASD), have Attention Deficit Hyperactivity Disorder (ADHD) or other neurodiverse conditions.

Whether families think their child or young person may be autistic or have ADHD, are going through the diagnostic process, or have already received a diagnosis they are all welcome at SPACE.

How we help Families

Our key belief is that we build bridges between families, professionals and the local community to help families feel confident, empowered and less isolated. This in turn improves outcomes.

Building Confidence and Empowerment

- Training
- Workshops
- Conferences
- Support Groups
- Virtual Support
- Facebook Group
- Lending SPACE
- Inclusive activities
- Training for Professionals

Social Opportunities

- Teen Events
- Sibling Events
- Early and Primary Years Events
- Bespoke Social Groups
- Inclusive Activities

Reducing Isolation

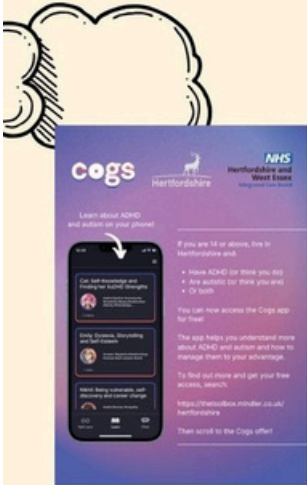
- Parent/Carer Events
- Family Events
- Building Communities
- Promoting Inclusion
- Facebook Group
- SBLO



spaceherts.org.uk

SUPPORT WITH SEND

HERTFORDSHIRE NEURODIVERSITY SUPPORT OFFER



Understanding my Autism/ADHD

- Open to Hertfordshire children aged 7-16
- **Post or Pre-diagnosis**
- Online or face-to-face
- Visit: thetoolbox.mindler.co.uk

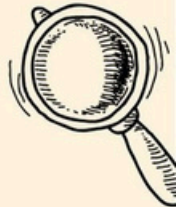
Cogs APP

- Young People aged 14+
- Providing support and information on Autism and ADHD
- No diagnosis required.
- **Free access**
- To sign up, visit thetoolbox.mindler.co.uk

Digital Webinars

- On demand webinars
- Topics relating to Autism, ADHD and the SEND world
- Available on the Hertfordshire Local offer.

Hertfordshire Neurodiversity Support Offer



The Toolbox

- Dedicated website for young people to gain support on ADHD and Autism.
- Signposting to services and interventions in Hertfordshire.
- Self-help tools and interactive livestreams available.
- Visit: thetoolbox.mindler.co.uk

Toolbox Live Chat

- Receive real-time support and guidance for children and young people (CYP) with Autism or ADHD.
- Access expert advice tailored to their feelings and concerns.
- **No diagnosis** required.

Support Hub

- **No diagnosis** required to access this support.
- Available to **parents, carers, and professionals.**
- Evening appts available to book.
- Call or WhatsApp the team on **01727 833963**



[Click here to return to the contents page](#)

NORTH HERTS CVS HOLIDAY CLUB

Description

For children and young people aged 5-19 years with complex health needs this Holiday Scheme will run from Greenside School.

This club will have a paediatric nurse on site, along with hoist changing facilities.

Location

Greenside School, Shephall Green, Stevenage, Hertfordshire, SG2 9XS

Organisation

North Hertfordshire Centre For Voluntary Service Limited

<https://www.breakawayplayschemes.org.uk/request-a-place/breakaway-complex-needs>



SUPPORT WITH EDUCATION

EHCP INFORMATION

EHCP Information

What is an Education, Health and Care plan? (EHCP)

An education, health and care plan (EHCP) is a legally binding document that:

- describes all of the special education, health and care needs of the child or young person which relate to their disability
- sets out all of the extra help and support they will need to overcome barriers to learning
- identifies meaningful education and other outcomes they would like to achieve as they prepare for adult life.

The EHCP process in Hertfordshire

1. Requesting an EHC assessment

This is usually done in partnership with your child or young person's educational setting, or if your child does not attend one, you could speak to your GP or health visitor.

2. Deciding whether an EHC assessment is needed

Not everyone meets the criteria for an EHC needs assessment. If we (Hertfordshire County Council) decide not to assess, we will let you know why.

3. What happens during the EHC assessment

Professionals such as teachers and health professionals provide information for the assessment. If it is concluded that special educational provision is needed to meet your child's needs, you will get an EHCP.

4. The EHCP document itself

We (Hertfordshire County Council) create EHCPs together with families. An EHCP should be a forward looking document, centred on your child's own future goals, and how they can achieve them.

5. Reviewing the EHCP

You will be offered a review of the EHCP at least once a year to ensure it stays up-to-date and continues to provide the best support your child or young person needs. There are different types of review, if your child is aged between 0-5 for example, or if there's been a change in your circumstances such as changing schools.

Request an Assessment

The following link provides information on who can and how to make a request for an assessment, including the form that needs to be completed: [request an assessment](#)

Twinkl: A Parent Guide to the EHCP Application and Review Process

Twinkl have created a document to help guide parents through the EHCP Application and Review process. It breaks down the process into step by step sections of information. You can find a copy of the Twinkl Parent Guide here: [Twinkl Parent Guide](#)

Parent Support Organisations

[SENDIASS Hertfordshire](#) [IPSEA](#) [SOS!SEN](#)

More useful links

[Teachers to your home EHCP guide](#) [HCT SEND Resources](#)

[Click here to return to the contents page](#)

NHPSS

North Herts Primary Support Service



North Herts Primary Support Service (NHPSS) is a commissioned service providing social, emotional and mental health (SEMH) support for pupils in Letchworth, Baldock and Royston partnership areas.

North Herts ESC have created the North Herts Primary Support Service (NHPSS) to provide primary support services to Letchworth, Baldock and Royston schools.

The baseline outcomes are that pupils worked with by the NHPSS will make positive progress and achievement. Engage in learning as a result of the work done with their social, emotional and mental health difficulties, allowing them to access a full curriculum by helping to remove their barriers to learning.

As part of this support we expect to have varying parental contact, especially for pupils who require complex support to meet their needs. This can include but not limited to: regular meetings, input into EHCP process and involvement within the safeguarding sector.

Contact NHPSS via email: supportservices@northhertsesc.herts.sch.uk More information including our GDPR policy can be found on our website: www.northhertsesc.herts.sch.uk (Please click on Our Services, then Primary Outreach

HPOSS



Hitchin Primary Outreach Support Service

Hitchin Primary Outreach Support Service HPOSS is based at Oughton Primary & Nursery School, Mattoke Road, Hitchin SG5 2NZ Tel:01462 450716.

The outreach service covers primary schools in Hitchin and the surrounding villages.

As a team we are able to use our combined experience and skills to support settings and children with Social, Emotional and Mental Health needs SEMH and SEND that are at risk of exclusion.

Our support may include-

- direct work with pupils
- advice and training for staff
- assistance with identification of needs
- development of strategies and policies

Individual work with children and school settings is through referral to the service. We use the Hertfordshire Behaviour Strategy tiered system, to help identify the level of support required.

<https://nhdspl.org.uk/outreach-support.html>

DSPL 1



Delivering Special
Provision Locally

North Herts DSPL1 Area 1 - Hitchin, Letchworth, Baldock and Royston

What is Delivering Special Provision Locally (DSPL)?

DSPL is a Hertfordshire-wide partnership approach where parents, carers, staff in early years settings and schools, further education colleges, local authority officers and representatives from other agencies, work together as part of an Area Group, to ensure that there is a range of provision and support services available in their local community that :

- Meets the needs of children and young people with special educational needs and/or disabilities (SEND), aged 0-25, as close to home as possible.
- Improves outcomes for wellbeing and attainment
- Widens choice for children and parents/carers
- Removes barriers to learning
- Uses resources more effectively
-

There are nine DSPL Area Groups across the county that meet regularly to discuss what services are available and to influence how services are shaped and developed to ensure the children and young people with SEND in their area receive the right support in their educational activities.

Please find information relating to [Hertfordshire Grid for Learning](#) on their website.

<https://nhdspl.org.uk/>

SLCA TEAM

SLCA Team (Speech language communication and autism):

This team provides specialist advice and intervention for children and young people with autistic spectrum conditions and/or speech, language and communication difficulties.

We are a team of qualified teachers and specialists who support children and young people who have needs relating to speech, language, and communication needs (SLCN), and/ or communication and autism.

Who we support

Children and young people 0 - 25

We work with children and young people aged 0 – 25 years old with communication and autism needs and / or SLCN.

Parents and carers

We provide Early Years (ages 0-5) autism training and techniques for parents and carers to help them support their child at home in preparation for education.

We work closely with parents and carers when providing advice and guidance for schools.

Schools and education providers

We work with professionals to provide advice and guidance to schools and help them support children and young people with speech, language, communication and autism needs. We draw on a range of recognised approaches such as Elklan, the Autism Education Trust, SCERTS, TEACCH, and Attention Autism. We also offer targeted training to schools to help them improve the support they offer for children with speech, language, communication and autism needs.

For more information including how to request support, please visit <https://www.hertfordshire.gov.uk/microsites/local-offer/services-for-children-and-young-people/communication-and-autism-team.aspx>

SUPPORT WITH EDUCATION ASD PROVISION MAPPING

[Click here](#) to be taken to a copy of Hertfordshire's ASD Provision Mapping document.

SUPPORT WITH EDUCATION GUIDE TO EXCLUSIONS

[Click here](#) to be taken to a copy of Herts Parent Carer Involvement's guide for parents of children with SEND about exclusions, suspensions and other attendance issues.

[Click here to return to
the contents page](#)

NESSIE



Many children and young people we support are anxious about talking to a therapist. This could be because they have experienced trauma; they may be fostered or adopted; they may be neurodivergent; or perhaps they prefer more flexible, creative approaches.

We support the mental health of children and young people in three ways:

We offer 1-1 and group therapy for children and young people

We offer training and supervision to professionals

We offer webinars and support to parents and carers.

We provide support through partnering with local schools, county councils and community organisations within Hertfordshire, Cambridgeshire, Peterborough and the surrounding counties. Parents can also reach out to us directly.

Nessie is funded to provide free support in many locations, and schools or families can also fund support directly.

Together our therapists have over 200 years of experience. We welcome diversity and have specialist Arts, trauma, SEND and LGBTQ+ therapists within our team. We receive excellent feedback.

Our long history of working relationships with local statutory and community partners means we can effectively signpost people to the best support in your area.

nessieined.com

HERTS SPORT & PHYSICAL ACTIVITY PARTNERSHIP



Known as HSP, the Partnership has a core team of full and part-time professionals, and we are involved in a wide range of exciting projects, campaigns and strategic influencing work to deliver against our objectives. The Partnership also has a voluntary board that represents the various work areas we are involved in and provides strategic oversight and guidance.

The HSP team works alongside numerous public, private and voluntary partners, bringing together expertise, resources and ideas from all parts of the sports, health and physical activity arena in Hertfordshire and beyond.

HAPpy Camps

Hertfordshire's Holiday Activity and Food Programme (known locally as HAPpy) runs during the Spring, Summer and Winter holidays.

HAPpy Camps provide a range of fun experiences, including physical activity, enrichment, a healthy meal and snacks for eligible children.

These camps are for children aged 4-16 (reception to year 11) who are registered to receive benefits-related free school meals. Your school will provide a booking code up to six weeks before the HAPpy camps open.

sportinherts.org.uk/happy

SUPPORT WITH EDUCATION

ALTERNATIVE PROVISION

Hertfordshire Alternative Provision List

Setting	Age Range	Sector/ Specialism	Address
Amwell View	2-19	Severe & complex LD	Stanstead Abbots, Nr. Ware, Station Road, SG12 8EH https://amwell.herts.sch.uk/
Aurora Meldreth Manor	6-19	MLD & specific learning disabilities including ASD, ADHD	Fenny Lane, Meldreth, Royston, SG8 6LG www.theauroragroup.co.uk
Avanti Brook SRP (opening Sept 24)	3-11	SLCA	Avanti Brook Primary School, Newland Avenue, Bishop's Stortford, CM23 2UW avanti.org.uk
Avanti Grange SRP	11-13	SLCA	Avanti Grange Secondary School, Newland Avenue, Bishop's Stortford, CM23 2DB avanti.org.uk
Batchwood	11-16	SEMH	Townsend Drive, St Albans, AL3 5RP www.batchwood.herts.sch.uk
Brandles	11-16	SEMH (boys)	Weston Way, Baldock, SG7 6EY www.brandles.herts.sch.uk
Breakspeare School	2-19	SLD	Gallows Hill Lane, Abbots Lanley, Hertfordshire, WD5 0BU www.breakspeare.herts.sch.uk
Bushey Meads School SRP	11-18	SLCA	Bushey Meads Secondary School, Coldharbour Lane, Bushey, WD23 4PA busheymeads.org.uk
Colnbrook School	4-11	LD, ASD, speech & language	67 Hayling Road, Watford, WD17 7UY www.colnbrook.herts.sch.uk
Cowley Hill Base	3-11	SLC	Cowley Hill Primary School, Winstre Road, Borehamwood, WD6 5DP www.cowleyhill.herts.sch.uk

[Click here to return to the contents page](#)

SUPPORT WITH EDUCATION

ALTERNATIVE PROVISION

Hertfordshire Alternative Provision List cont'd

Setting	Age Range	Sector/ Specialism	Address
Egerton Rothesay School	6-16	LD, speech & language, ASD	Durrants Lane, Berkhamstead, HP4 3UJ eger-roth.co.uk
Falconer School	11-16	SEMH (boys)	1 Falconer Road, Bushey, WD23 3AQ www.falconer.herts.sch.uk
Garston Manor	11-16	LD, ASD, SLCN	Horseshoe Lane, Watford, WD25 7HR www.garstonmanor.herts.sch.uk
Giles Nursery and Infant School Base	3-7	SLC	Giles Nursery and Infant School, Durham Road, Stevenage, SG1 4HS www.gilesnurseryandinfants.co.uk
Greenside	2-19	SLD	Shephall Green, Shephall, Stevenage, Hertfordshire, SG2 9XS www.greenside.herts.sch.uk
Hailey Hall	11-16	SEMH (boys)	Hailey Lane, Hertford, SG13 7PB https://haileyhall.herts.sch.uk/
Haywood Grove	5-11	SEMH	St Agnells Lane, Hemel Hempstead, HP2 7BG https://www.haywoodgrove.co.uk/
Heathlands	3-16	Hearing impairment	Heathlands Drive, St Albans, AL3 5AY heathlands.herts.sch.uk
Knightsfield	10-18	Hearing impairment	Knightsfield, Welwyn Garden City, AL8 7LW www.knightsfield.herts.sch.uk
Lakeside School	2-19	SLD, ASD	Lemsford Lane, Welwyn Garden City, AL8 6YN www.lakeside.herts.sch.uk

[Click here to return to the contents page](#)

SUPPORT WITH EDUCATION

ALTERNATIVE PROVISION

Hertfordshire Alternative Provision List cont'd

Setting	Age Range	Sector/ Specialism	Address
Larwood	5-11	SEMH	Webb Rise, Stevenage, SG1 5QU www.larwood.herts.sch.uk
Longdean Speech and Language Base	11-18	SLC (Possible conversion to SRP for SLCA from April 24)	Longdean School, Rumballs Road, Hemel Hempstead, HP3 8JB dacorumdspl.org.uk
Lonsdale	3-18	PNI	Brittain Way, Stevenage, SG2 8UT www.lonsdale.herts.sch.uk
Maple Grove SRP (opening Sept 24)	3-11	SLCA	Maple Grove Primary School, St Agnell's Lane, Grove Hill, Hemel Hempstead, HP2 7BG www.maplegrove.herts.sch.uk
Maple Primary School Base	3-11	Hearing impairment and deafness	Maple Primary School, Hall Place Gardens, St Albans, AL1 3SW maple.herts.sch.uk
Margaret Wix SRP	3-11	SLCA	Margaret Wix Primary School, High Oaks, St Albans, AL3 6EL www.margaretwix.herts.sch.uk
Meadow Wood School	3-11	PNI	Coldharbour Lane, Bushey, WD23 4NN www.meadowwood.herts.sch.uk
Melbourn Village College Cabin	11-16	ASD	Melbourn Village College, The Moor, Melbourn, Royston, SG8 6EF www.melbournvc.org
Middleton	4-11	LD, SLCN, ASD	Walnut Tree Walk, Ware, SG12 9PD middleton.herts.sch.uk
Moss Bury Deaf Unit	4-11	Deafness	Moss Bury Primary School, Webb Rise, Stevenage, SG1 5PA www.mossbury.herts.sch.uk

[Click here to return to the contents page](#)

SUPPORT WITH EDUCATION

ALTERNATIVE PROVISION

Hertfordshire Alternative Provision List cont'd

Setting	Age Range	Sector/ Specialism	Address
Pinewood	11-16	LD	Hoe Lane, Ware, SG12 9PB www.pinewood.herts.sch.uk
Radlett Lodge School	4-19	ASD	Harper Lane, Radlett, WD7 9HW www.autism.org.uk
Redbourn Park	7-11	SEMH, ASD	Henry Wells Square, Hemel Hempstead, HP2 6BH www.redbournpark.co.uk
Roman Fields	14-18	SEMH	11 Box Lane, Hemel Hempstead, Hertfordshire, HP3 0DF www.romanfields.herts.sch.uk
Sauncey Wood SRP	3-11	SLCA	Sauncey Wood Primary School, Pickford Hill, Harpenden, AL5 5HL www.saunceywood.herts.sch.uk
Sense College Barnet	16-25	Independent college for moderate to complex LD, vision impairment, hearing impairment and ASD	12 Hyde Close, Barnet, EN5 5TJ www.sense.org.uk
Southfield School	4-11	LD	Woods Avenue, Hatfield, AL10 8NN www.southfield.herts.sch.uk
St Elizabeth's Centre	3-19	Epilepsy & Complex needs	South End, Much Hadham, SG10 6EW www.stelizabeths.org.uk
St Luke's	7-16	MLD, ASD	Crouch Hall Lane, Redbourn, St Albans, Hertfordshire, AL3 7ET www.saint-lukes.co.uk
The Collett School	4-16	LD, MLD, ASD, SLCN	Lockers Park Lane, Hemel Hempstead, HP1 1TQ www.collett.herts.sch.uk

[Click here to return to
the contents page](#)

SUPPORT WITH EDUCATION

ALTERNATIVE PROVISION

Hertfordshire Alternative Provision List cont'd

Setting	Age Range	Sector/ Specialism	Address
The Priory SRP	11-18	SLCA	The Priory School, Bedford Road, Hitchin, SG5 2UR www.priory.herts.sch.uk
The Valley	11-16	LD	Broadhall Way, Stevenage, SG2 9BN thevalley.herts.sch.uk
Warren Dell SRP	3-11	SLC	Warren Dell Primary School, Gosforth Lane, South Oxhey, Watford, WD19 7UZ www.warrendellprimary.co.uk
Watling View School	2-19	wide range of complex and profound learning difficulties	Watling View, St Albans, AL1 2NU www.watlingview.herts.sch.uk
White Trees Independent School	11-18	SEMH with residential setting	The Snap Factory, Twyford Road, Bishop's Stortford, CM23 3LJ https://whitetrees-group.co.uk/white-trees-independent-school
Woodfield School	3-19	SLD	Malmes Croft, Hemel Hempstead, Hertfordshire, HP3 8RL woodfield.herts.sch.uk
Woolgrove School	4-11	LD	Pryor Way, Letchworth Garden City, SG6 2PT woolgrove.herts.sch.uk

SUPPORT WITH EDUCATION

ALTERNATIVE PROVISION

Bedfordshire Alternative Provision List

Setting	Age Range	Sector/ Specialism	Address
Active Support Education Centre	9-16	Complex SEMH needs	Unit 1 & 3, Leagrave Road, Luton, LU3 1RJ activesupportededucation.co.uk
Arnold Academy ARP	10-13	ASD	Arnold Academy, Hexton Road, Barton-le-Clay, MK45 4JZ www.arnoldacademy.org.uk
Biggleswade Academy ARP	9-13	ASD Provision at Mead End Site	Biggleswade Academy, Mead End, Biggleswade, SG18 8JU www.biggleswadeacademy.org
Bramingham Primary School ARP	4-11	Physical disabilities	Bramingham Primary School, Freeman Avenue, Luton, LU3 4BL www.bramingham.net/web/send
Chantry Primary Academy ARP	4-11	Visual impairment	Chantry Primary School, Tomlinson Avenue, Luton, LU4 0QP www.chantryprimaryacademy.com
Esland School	8-18	Therapeutic, SEMH, Trauma	Esland Bedford School, Unit 45, Wrest Park, Silsoe, MK45 4HS www.eslandcare.co.uk
Gamlingay Village Primary Cabin	4-11	ASD	Gamlingay Village Primary School, Station Road, Gamlingay, Sandy, SG19, 3HD www.gamlingayvp.org
Goldington Green Academy ARP	2-11	ASD	Goldington Green Academy, Goldington Green, Bedford, MK43 7RE www.goldingtongreenacademy.co.uk
Grange Academy	7-16	MLD, ASD	Halsey Road, Kempston, Bedford, MK42 8AU grange.beds.sch.uk
Heathwood Lower School ARP	4-9	Speech and Language	Heathwood Lower School, Heath Road, Leighton Buzzard, LU7 3AU heathwoodlower.com

[Click here to return to the contents page](#)

SUPPORT WITH EDUCATION

ALTERNATIVE PROVISION

Bedfordshire Alternative Provision List cont'd

Setting	Age Range	Sector/ Specialism	Address
Icknield High School ARP	11-18	Hearing impairment	Icknield High School, Riddy Lane, Luton, LU3 2AH www.icknield.beds.sch.uk
Icknield Primary School ARP	4-11	Hearing impairment	Icknield Primary School, Birdsfoot Lane, Luton, LU3 2JB www.icknieldprimary.co.uk
Ivel Valley School & College	2-25	MLD, SLD, ASD	The Baulk, Biggleswade, SG18 0PT www.ivelvalley.beds.sch.uk
Lady Zia Wernher School	2-11	SLD, PMLD, physical impairment, ASD, complex medical needs	Ashcroft Road, Luton, LU2 9AY www.ladyziawernherschool.com
Lincroft Academy ARC	11-16	ASD	Lincroft Academy, Station Road, Oakley, MK43 7RE lincroft.academy
Nightingale ASC Centre	11-18	ASD	Mark Rutherford School, Wentworth Drive, Bedford, MK41 8PX www.markrutherford.beds.sch.uk
Oak Bank School	9-19	SEMH, ASD	Sandy Lane, Leighton Buzzard, LU7 3BE www.oakbank.beds.sch.uk
Ramsey School ARP	5-9	ASD	Ramsey Manor Lower School, Manor Road, Barton-le-Clay, MK45 4NS ramseymanor.co.uk
Richmond Hill School	5-11	Severe and complex LD, ASD, SEMH, HI, VI, SLCN, MSI	Sunridge Avenue, Luton, LU2 7JL www.richmondhill.luton.sch.uk
Ridgeway School	3-19	Physical disabilities, medical conditions and association learning and communication difficulties	Hill Rise, Kempston, MK42 7EB www.ridgewayschool.org.uk

[Click here to return to the contents page](#)

SUPPORT WITH EDUCATION

ALTERNATIVE PROVISION

Bedfordshire Alternative Provision List cont'd

Setting	Age Range	Sector/ Specialism	Address
Samuel Whitbread Academy ARP	13-18	ASD	Samuel Whitbread Academy, Shefford Road, Clifton, Shefford, SG17 5QS www.samuelwhitbread.org.uk
Sense College Bedford	16-25	Independent college for moderate to complex LD, vision impairment, hearing impairment and ASD	Suites A & B, Emerald Court, Pilgrims Centre, Brickhill Drive, MK41 7PZ www.sense.org.uk/places/bedford-bedfordshire
Sense College Luton	16-25	Independent college for moderate to complex LD, vision impairment, hearing impairment and ASD	Keech Hospice Care, Great Bramingham Lane, Streatley, Luton, LU3 3NT www.sense.org.uk/places/streatley-luton
Silsoe V.C. Lower School ARP	3-9	SEMH	Silsoe V.C. Lower School, Chestnut Avenue, Silsoe, Bedfordshire, MK45 4GP
St Andrew's C of E V.C. Lower School ARP	4-9	SLCN	St Andrew's C of E V.C. Lower School, Brunts Lane, Biggleswade, SG18 0LY
St Johns	2-19	Severe and complex LD	Austin Canons, Kempston, MK42 8AA
St Swithun's C of E V.C. Primary School ARP	4-11	ASD	St Swithun's C of E V.C. Primary School, Ivel Road, Sandy, SG19 1AX
The Academy of Central Bedfordshire – Houghton Regis	11-16	SEMH	Parkside Drive, Houghton Regis, LU5 5PX
The Academy of Central Bedfordshire – Stotfold	11-16	SEMH	Church Road, Stotfold, SG5 4NE
The Chiltern School	3-19	SLD, PMLD, ASD	Kingsland Campus, Parkside Drive, Houghton Regis, LU5 5PX

[Click here to return to the contents page](#)

SUPPORT WITH EDUCATION

ALTERNATIVE PROVISION

Bedfordshire Alternative Provision List cont'd

Setting	Age Range	Sector/ Specialism	Address
The Rushmere Park Academy ARP	4-9	ASD	Rushmere Park Academy, East Street, Leighton Buzzard, LU7 1EW
The Vale Academy ARP	4-11	ASD	The Vale Academy, Wilbury Drive, Dunstable, LU5 4QP
Toddington St George base	3-8	Hearing impairment	Toddington St George C of E School, Manor Road, Toddington, LU5 6AJ
Weatherfield	7-19	LD, ADHD/ADD, developmental language disorder, speech & language needs	Weatherfield Academy, Brewers Hill Road, Dunstable, LU6 1AF
Windmill High School	11-18	PMLD, SLD and ASD	1 York Street, Luton, LU2 0EZ
Woodlands Secondary School	11-18	SLD, PMLD, ASD, epilepsy, and physical or sensory impairments	Northwell Drive, Luton, LU3 3SP

SUPPORT WITH EDUCATION

ALTERNATIVE PROVISION

Cambridgeshire Alternative Provision List

Setting	Age Range	Sector/ Specialism	Address
Begdale House	10-16	SEMH	Begdale Road, Elm, Wisbech, PE14 0AZ www.education.keyschildren.co.uk/school/begdale-house-school/
Cambian Home Tree School	12-18	Emotional & social difficulties, additional complex needs, SEMH	172 March Road, Friday Bridge, Wisbech, PE14 0LP www.cambianguroup.com
Cambian Wisbech School	7-17	SEMH, emotional & social difficulties, additional complex needs	The Old Sessions House, 32 Somers Road, Wisbech, PE13 1JF www.cambianguroup.com
Castle Special School	2-19	Severe or complex LD	Castle School, Courtney Way, Cambridge, CB4 2EE www.castleschool.info
Colville Primary Speech & Language Centre	4-11	Severe language and communication difficulties	Colville Road, Cambridge, CB1 9EJ www.colvilleschool.co.uk/speech-and-language-centre/
Comberton Autistic Spectrum Cabin	11-16	ASD	Comberton Village College, West Street, Toft, CB23 7DU www.combertonvc.org
Ernulf Autistic Spectrum Cabin	11-16	ASD	Ernulf Academy, Barford Road, Eynesbury, PE19 2SH www.astreaernulf.org
Fairway School	11-16	ASD, LD, PMLD	Westwood Road, St. Ives, PE27 6RS www.theauroragroup.co.uk
Granta	2-19	MLD, SLD, PMLD	Cambridge Road, Linton, Cambridge, CB21 4NN www.granta.cambs.sch.uk

[Click here to return to the contents page](#)

SUPPORT WITH EDUCATION

ALTERNATIVE PROVISION

Cambridgeshire Alternative Provision List cont'd

Setting	Age Range	Sector/ Specialism	Address
Gretton	5-19	LD, MLD and ASD	Manor Farm Road, Girton, Cambridge, Linton, CB3 0RX www.grettonschool.com
Gretton School – The Rectory	5-19	ASD	The Rectory, 65 High School, Girton, Cambridge, CB3 0QD www.grettonschool.com
Heltwate School	4-19	MLD, SLD, ASD and additional medical needs	Heltwate, Bretton, Peterborough, PE3 8RL www.heltwate.co.uk
Heltwate School – St. Georges	4-19	MLD, SLD, ASD and additional medical needs	Heltwate, Lawn Avenue, Dogsthorpe, Peterborough, PE1 3RB www.heltwate.co.uk
Highfield Littleport Academy	2-19	Significant and complex LD	Highfield Littleport Academy, Camel Road, Littleport, CB6 1EW highfieldlittleport.org
Highfield Special Academy	2-19	Severe or complex LD	Highfield, Ely, Downham Road, CB6 1BD highfieldschoolely.co.uk
Holme Court	5-16	Dyslexia, dyspraxia, SPLD	Cherry Hinton Hall, Cherry Hinton Road, Cambridge, CB1 8DW www.holmecourt.com
Hope Tree School – Girls School	7-16	ASD	Nursery House, Manor Farm, Impington, CB24 9NG www.hopetreeschool.co.uk
Marshfields School	7-19	MLD	Eastern Close, Dogsthorpe, Peterborough, PE1 4PP www.marshfields.co.uk
Meadowgate Special School	2-19	LD	Meadowgate Academy, Meadowgate Lane, Wisbech, PE13 2JH www.meadowgateacademy.co.uk
NeneGate School	9-16	SEMH	Park Lane, Peterborough, PE1 5GZ www.nenegateschool.co.uk

[Click here to return to
the contents page](#)

SUPPORT WITH EDUCATION

ALTERNATIVE PROVISION

Cambridgeshire Alternative Provision List cont'd

Setting	Age Range	Sector/ Specialism	Address
Olive AP Academy	11-16	Communication needs, LD, SEMH and sensory needs	Ascham Road, Cambridge, CB4 2BD apcambridge.oliveacademies.org.uk
Olive AP Academy – Nene Valley	11-16	Communication needs, LD, SEMH, Sensory needs	Coalwharf Road, Wisbech, PE13 2FP apnenevalley.oliveacademies.org.uk
On Track Education Centre	11-16	ASD, communication needs, SEMH	Enterprise House, Old Field Lane, Wisbech, PE13 2RJ ontrackeducation.com
Papworth Hall School	5-16	ASD, LD	Papworth Everard, Cambs, CB23 3RD www.papworthhallschool.co.uk
Park House	6-19	ASD, LD	Wisbech Road, Thorney, Peterborough, PE6 0SA parkhouseschool.co.uk
Red Balloon	11-18	Trauma, mental health and EBSA	57 Warkworth Terrace, Cambs, CB1 1EE www.redballoonlearner.org
Riverside Meadows Academy	11-16	SEMH	Riverside Meadows academy, Almond Road, St Neots, PE19 1EA www.riversidemeadows.cambs.sch.uk
Riverside Meadows Academy – Wisbech Academy	11-16	SEMH	Wisbech Green, Barton Road, Wisbech, PE13 4TG www.riversidemeadows.cambs.sch.uk
Samuel Pepys School	3-19	MLD, SLD, PMLD, ASD, physical, visual and hearing impairments	Cromwell Road, St Neots, PE19 2EZ samuelpepysschool.co.uk
Selwyn Hall School	7-18	SEMH, ASD, ADHD, FASD, anxiety, communication and interaction, cognition and learning needs.	Selwyn Hall School, Royston Road, Foxton, CB22 6SE www.selwynhallschool.co.uk

[Click here to return to the contents page](#)

SUPPORT WITH EDUCATION

ALTERNATIVE PROVISION

Cambridgeshire Alternative Provision List cont'd

Setting	Age Range	Sector/ Specialism	Address
Sense College - Knapwell	16-25	moderate to complex LD, vision and hearing impairment, ASD	Cornfield Suite, Glebe Farm, Knapwell, Cambridgeshire, CB23 4GG www.sense.org.uk
Sense College - Peterborough	16-25	moderate to complex LD, vision and hearing impairment, ASD	Sense Peterborough, Ground Floor, 50 Forder Way, Cygnet Park, Hampton, Peterborough, PE7 8JB www.sense.org.uk
Shelldene House School	12-19	SEMH	Main Road, Elm, PE14 0HJ www.shelldenehouse.com
Sir Harry Smith ERP	10-13	Children on roll at Whittlesey / Coates School with SEN and an EHCP	Sir Harry Smith Community College, Eastrea Road, Whittlesey, PE7 1XB www.sirharrysmith.cambs.sch.uk
Spring Common Academy	2-19	Severe and complex LD	Spring Common Academy, American Lane, Huntingdon, PE29 1TQ www.springcommon.cambs.sch.uk
Spring Meadow Infant Assessment Unit	4-7	Social communication need including; delayed speech and sensory needs	High Barns, Ely, Cambridgeshire, CB7 4RB www.springmeadow.cambs.sch.uk
The Beeches Independent School	8-25	LD, SEMH	218 Dogsthorpe Road, Peterborough, Cambridgeshire, PE1 3PB beechesuk.co.uk
The Cavendish	7-12	ASD	Park Drive, Impington, CB24 9LY thecavendishschool.org.uk
The Centre School	11-16	BESD	Cottenham Village Collage, High Street, Cottenham, CB24 8UA www.astreacentreschool.org

[Click here to return to the contents page](#)

SUPPORT WITH EDUCATION

ALTERNATIVE PROVISION

Cambridgeshire Alternative Provision List cont'd

Setting	Age Range	Sector/ Specialism	Address
The Cooper Centre	11-16	Students who have SEN with an EHCP	Thomas Clarkson Academy, Corporation Road, Wisbech, PE13 2SE www.thomasclarksonacademy.org
The Harbour – Boys School	5-16	SEMH	55 Station Road, Wilburton, Ely, CB6 3RR theharbour.academy
The Old School House – Boys School	8-13	Boys boarding school SEMH	March Road, Friday Bridge, Wisbech, PE14 0HA https://chartwellgroup.org.uk/index.php
Witchford Autistic Spectrum Cabin	13-16	ASD	Witchford Village College, Manor Road, Witchford, CB6 2JA www.witchfordvc.co.uk

SUPPORT WITH EDUCATION

ALTERNATIVE PROVISION

Essex Alternative Provision List

Setting	Age Range	Sector/ Specialism	Address
Beacon Hill Academy	2-19	Severe and complex LD	Beacon Hill Academy, Erriff Drive, South Ockendon, RM15 5AY www.beaconhillacademy.org.uk
Brook View School	8-19	ASD boys only	Wethersfield, Braintree, CM7 4BU www.exceptional-ideas.co.uk
Castledon School	5-19	MLD, ASD, LD, SLCN	Castledon School, Bromfords Drive, Wickford, SS12 0PW https://www.castledon.org/
Cedar Hall School	4-16	MLD and additional needs	Cedar Hall School, Hart Road, Thundersley, SS7 3UQ www.cedarhallschool.co.uk
Chatten	4-19	ASD and complex LD	Witham, Rickstones Road, CM8 3HH www.chattenfreeschool.co.uk
Clarity Independent School	6-16	MLD and complex learning profiles.	Bridge Farm Barn, Woodhill Road, Sandon, CM2 7SG www.clarity.essex.sch.uk
Columbus School & College	3-19	SLD	Oliver Way, Chelmsford, CM1 4ZB https://sites.google.com/a/etinet.org/columbus-school-and-college
Doucecroft	3-19	ASD, additional complex needs	Abbots Lane, Eight Ash Green, Colchester, CO6 3QL www.autism-anglia.org.uk
Endeavour Cooperative Academy	5-19	MLD or complex needs	Hogarth Avenue, Brentwood, CM15 8BE www.endeavourca.co.uk
Glenwood School	3-19	ASD, complex physical and sensory impairments, SLD	Rushbottom Lane, New Thundersley, Benfleet, SS7 4LW www.glenwood.essex.sch.uk
Grove House School	8-19	SLCN	Sawyers Hall Lane, Brentwood, CM15 9BZ www.grovehouseschool.co.uk

[Click here to return to the contents page](#)

SUPPORT WITH EDUCATION

ALTERNATIVE PROVISION

Essex Alternative Provision List cont'd

Setting	Age Range	Sector/ Specialism	Address
Harlow Fields School & College	3-19	Severe, moderate and complex needs, ASD, sensory impairments	Harlow Fields School and College, Tending Road, Harlow, CM18 6RN www.grovehouseschool.co.uk
Hatchside School	2-7	Range of SEND	Aldbrough Road North, Newbury Park, Ilford, IG2 7SR www.hatchside-school.org
Hatton School & Special Needs Centre	3-11	SEND, ASD, LD and language and communication	Roding Lane South, Woodford Green, IG8 8EU www.hattonspecialschool.co.uk
Hillside Special School	4-16 (19 with PMLD diagnosis)	SLD and PMLD	Hitchcock Place, Sudbury, CO10 1NN www.hillsidespecial.org.uk
Hopewell Independent School	5-19	SEMH and LD	Harmony House, Baden Powell Close, Dagenham, RM9 6XN www.hopewellschool.co.uk
Kingsdown School	3-14	SLD, PMLD, Physical disabilities and LD	Kingsdown School, Snakes Lane, Southend-On-Sea, SS2 6XT kingsdownschool.org
Kingswode Hoe School	5-16	MLD, speech & language, SEMH and ASD	Sussex Road, Colchester, Essex CO3 3QJ www.seaxtrust.com
Lancaster School	14-19	Neurological impairments, complex physical medical needs, physical disability, SLD, PMLD	Prittlewell Chase, Westcliff-On-Sea, SS0 ORT www.lancaster.southend.sch.uk
Langham Oaks	10-16 (boys)	SEMH	Langham Oaks School, School Road, Langham, Colchester, CO4 5PA www.langhamoaks.co.uk

[Click here to return to the contents page](#)

SUPPORT WITH EDUCATION

ALTERNATIVE PROVISION

Essex Alternative Provision List cont'd

Setting	Age Range	Sector/ Specialism	Address
Lexden Springs Residential Special School	3-19	Complex LD, SLD, ASD	Winstree Road, Colchester, CO3 0PZ lexdensprings.co.uk
Lime Academy – Forest Approach	4-19	SEND	Settle Road, Havering, RM3 9YA limeacademyforestapproach.org
Lime Academy Hornbeam – Brookfield House School	4-19	Complex learning, medical and sensory needs	Alders Avenue, Woodford Green, Essex, IG8 9PY limeacademyhornbeam.org
Lime Academy Hornbeam – William Morris School	8-19	SLD	Folly Lane, Walthamstow, E17 5NT limeacademyhornbeam.org
Lime Academy Ravensbourne	2-19	Complex physical and medical needs	Neave Cres, Romford, RM3 8HN limeacademyhornbeam.org
Little Heath School	11-19	ASD, LD and complex needs	Hainault Road, Little Heath, Romford, RM6 5RX www.littleheath.herts.sch.uk
Luxborough Court School	5-19	ASD, SLCN, MLD, LD, Sensory processing, ADHD	Luxborough Lane, Chigwell, IG7 5AA www.witherslackgroup.co.uk
Market Field School & College	4-19	MLD	School Road, Elmstead Market, CO7 7ET www.marketfieldschool.co.uk
Mid Essex Cooperative Academy	4-16	Cannot cope in mainstream	The Street, Heybridge, Essex, CM9 4NB
Newbridge Lower School	2-11	Range of complex SEND	161 Gresham Drive, Chadwell Heath, Essex, RM6 4TR newbridgeschool.schooljotter2.com

SUPPORT WITH EDUCATION

ALTERNATIVE PROVISION

Essex Alternative Provision List cont'd

Setting	Age Range	Sector/ Specialism	Address
Newbridge Upper School	11-19	Range of complex SEND	258 Barley Lane, Goodmayes, Essex, IG3 8XS newbridgeschool.schooljotter2.com
Oak View School	3-19	SEND, ASD, SLD	Oak View School, Whitehills Road, Loughton, IG10 ITS oakviewschool.org
Omnia Foundation	12-16 (boys only)	ASD or mental health	Rayleigh Town Sports & Social Club, London Road, Rayleigh, Essex, SS6 9DT omniafoundation.co.uk
Pioneer School	3-19	PMLD, moderate and complex LD	Ghyllgrove, Basildon, SS14 2LA sites.google.com/a/aetinet.org/pioneer-school/
Primrose Hill School	2-11	ASD	Primrose Hill School, 16a Primrose Hill, Chelmsford, CM1 2RQ www.exceptional-ideas.co.uk
Ramsden Hall Academy	10-16 (boys only)	SEMH	Heath Road, Ramsden Heath, Billericay, CM11 1HN www.ramsdenhall.org.uk
Roding Primary School and Nursery	3-11	Hearing impairment	Roding Lane North, Woodford Green, IG8 8NP www.rodingprimary.co.uk
Shorefields	3-19	Complex and severe and profound learning needs, ASD	Shorefields School, 114 Holland Road, Clacton-On-Sea, CO15 6HF www.shorefields.essex.sch.uk
Southview School	3-19	PNI	Southview School, Conrad Road, Witham, CM8 2TA www.southview.essex.sch.uk
St. John's RC School	5-19	Moderate to severe LD, ASD, SLCN	St Johns RC School, Turpins Lane, Woodford Green, IG8 8AX www.stjohnsrcschool.co.uk

[Click here to return to the contents page](#)

SUPPORT WITH EDUCATION

ALTERNATIVE PROVISION

Essex Alternative Provision List cont'd

Setting	Age Range	Sector/ Specialism	Address
St. Nicholas School	11-16	ASD, MLD	Philpott Avenue, Southend-On-Sea, SS2 4RL www.stnicholas-school.co.uk
Teaseldown School	11-19	ASD	Sible Hedingham, CO9 3PX https://www.exceptional-ideas.co.uk/our-schools
The Belsteads School	10-16	SEMH	Back Lane, Little Waltham, CM3 3PP belsteads.essex.sch.uk
The Edith Borthwick School	3-19	Severe and complex LD, ASD	Enterprise Drive, Braintree, CM7 2YN www.edithborthwick.essex.sch.uk
The Endeavour Cooperative Academy	5-19	MLD and complex needs	Hogarth Avenue, Brentwood, CM15 8BE www.endeavourca.co.uk
The Greenwell Academy	7-16	SEMH	*Permanent site to open 2025. Temporary address: Commonside Road, Harlow, Essex, CM18 7EZ www.beckmeadtrust.org/greenwell
The Hawthorns School	7-16	ASD	Fox Crescent, Chelmsford, Essex, CM1 2BN www.thehawthornsschool.com
The New Rush Hall School	5-16	SEMH	New Rush Hall School, Fencepiece Road, Hainault, IG6 2LB newrushhallschool.co.uk
The St. Christopher School	3-19	LD, ASD and ADHD	The St. Christopher School Academy Trust, Mountdale Gardens, Leigh-On-Sea, SS9 4AW thestchristopherschool.co.uk
The Tower School	11-18	ASD	33 High Street, Epping, CM16 4BA www.thetowerschool.co.uk

SUPPORT WITH EDUCATION

ALTERNATIVE PROVISION

Essex Alternative Provision List cont'd

Setting	Age Range	Sector/ Specialism	Address
The Yellow House Independent School	13-17	ADHD/ADD, ASD, dyslexia, Tourette's, sensory needs	1 Alderford Street, Sible Hedingham, Halstead, CO9 3HX www.theyellowhouseschool.org.uk
Thriftwood School & College	7-19	MLD, ASD, SLCN	Slades Lane, Galleywood, Chelmsford, CM2 8RW www.thriftwoodschool.com
Wells Park School	5-11	SEMH	School Lane, Lambourne Road, Chigwell, IG7 6NN www.beckmeadtrust.org/wells- park
Woodcroft School	5-14	ASD and complex educational needs	Woodcroft School, Whitakers Way, Loughton, IG10 1SQ www.woodcroftschoo.net

SUPPORT AT HOME

CITIZENS ADVICE



North Hertfordshire

Citizens Advice North Hertfordshire

Local charity, available to all, offering free confidential help and support.

How Citizens Advice North Hertfordshire can help you

We provide free advice on virtually any issue in many local settings across North Hertfordshire and South Cambridgeshire. If you live in Hitchin, Baldock, Royston, Letchworth Garden City, Bassingbourn, Melbourn and surrounding villages Citizens Advice North Herts can help you.

We have offices in Letchworth and Royston. Topics covered include welfare benefits; money and credit problems; employment; consumer rights; housing; neighbourhood disputes; education and healthcare; human rights; family and personal issues.

Get free impartial advice from Citizens Advice

On [this page](#) you will find help guides to help you with budgeting, debt, pensions, benefits, housing, employment, consumer and health issues -alongside many other issues. If you need personal advice, contact us.

Citizens Advice North Hertfordshire local number:

01462 689801

Use the number above to call the Citizens Advice North Hertfordshire. You will reach an answerphone – please leave a message and we aim to respond within 3 working days.

If you would like advice over the phone you can call the National Citizens Adviceline on 0800 144 88 48

Enquiry Form - Get Advice

<https://northhertscab.org.uk/contact-us/advice-enquiry/>

For further information please visit <https://northhertscab.org.uk/>

[Click here to return to the contents page](#)



SUPPORT AT HOME

FAMILY SUPPORT WORK



School Partnership Family Support Workers

Providing a quality family support service with experienced and qualified Family Support Workers.

Why a Family Support Worker?

Referrals to our support service come through your child's school and are only provided with parental consent. We can help with a number of things relating to your child and family life. This could be signposting the right services, attending appointments with you, help completing forms, concerns over debt or perhaps giving guidance on trying new routines to help at home.

How it works

Your child's school will discuss with you why they think a referral will be beneficial. If you are unsure at this stage, one of our team members could meet with you at your child's school. Once you have agreed to the referral and have consented to our intervention, one of our team members will call you to arrange an initial meeting. This could be held at our offices in Hitchin, at your child's school or in your home.

Together we would hope to:

- Promote family led approaches that are realistic and sustainable for you.
- Identify strengths, help to build upon self-esteem and confidence to sustain changes.
- Offer regular meetings together to review progress and barriers.
- Work alongside you as a professional friend.

If you feel you could benefit from family support, please contact your child's school who can make a referral.

[Click here to return to the contents page](#)



SUPPORT AT HOME

INTENSIVE FAMILY SUPPORT TEAMS (IFST)



Intensive Family Support Teams

The Intensive Family Support teams (IFST) work with families with multiple and complex needs who would benefit from intensive support.

The help they provide depends on each family's situation, but examples of issues they help with include:

- parenting skills
- improving school attendance
- training to help find a job
- help with housing problems
- managing money and debt.

There is no age focus for the service, as long as there is a dependent child (under 18) in the family.

The focus instead is to provide practical support to the whole family, when there is evidence of 4 of the following presenting issues being a concern to professionals across more than 1 family member, or the family are identified as requiring intensive whole family support which no other services are available to provide:

- parents or children involved in crime or anti-social behaviour
- children who have not been attending school regularly
- children who need help (for example they have had an assessment in the last year)
- adults out of work or at risk of financial exclusion or young people at risk of worklessness
- families affected by domestic violence and abuse
- parents or children with a range of health problems.

If you feel your family might benefit from some support, there are two ways to get in touch with a Families First professional:

1. Contact a professional who already works with your family, for example a health visitor, family support worker, teacher or school, youth worker, family centre or Carers in Herts.
 2. Contact our customer service centre 0300 123 4043
- Phone lines are open: Mon - Fri 8am - 8pm, Saturday 9am - 4pm

[Click here to return to the contents page](#)



SUPPORT AT HOME

HERTFORDSHIRE

FAMILY CENTRE SERVICE

About the Hertfordshire Family Centre Service



We offer the following services:

- help finding childcare
- antenatal classes
- support with breastfeeding
- health visiting (0-5 years)
- school nursing (5 years+)
- support with parenting and speech and language
- services for children with special needs and disabilities
- support for families experiencing domestic abuse
- opportunities for families to get involved with volunteering

The Family Centre Service is made up of 3 different teams, all here to help you and your family:

1. The Family Support Service - from pregnancy to 11 years old.
2. The Health Visitor team - from pregnancy to 5 years old.
3. The School Nursing team - from 5 to 19 years old.

To see what's on at the North Herts Family Centres, please visit:

<https://www.hertsfamilycentres.org/about-the-family-centre-service.aspx>

[Click here to return to
the contents page](#)



SUPPORT AT HOME

HOME-START



Home-Start works with families in communities right across the UK. Starting in the home, our approach is as individual as the people we're helping. No judgement, it is just compassionate, confidential help and expert support.

Home-Start Hertfordshire provides families struggling with post-natal depression, isolation, physical health problems, bereavement and many other issues the support of a volunteer family mentor who will spend around two hours a week in a family's home. Through practical and emotional support, they make sure parents have the skills, confidence and strength they need to nurture their children.

The model works because our family mentors are parents or have experience in caring for children. They understand how hard it can be. They work alongside parents, in their own homes, to help them cope with the stresses and strains of life and be the best parent they can be.

Areas covered by Home-Start Herts:

- North Herts
- Stevenage
- East Herts
- Dacorum
- St Albans
- Welwyn and Hatfield

Families can refer themselves or can (with the parent's permission) be referred by health, or other relevant professionals, who have concerns.

To find out more or make a referral visit: www.home-startherts.org.uk



SUPPORT AT HOME

HOUSING



Social Housing

Social housing in the district is for local residents with a housing need, for example due to overcrowding or because they need to move on medical grounds.

In North Hertfordshire social housing properties are owned and managed by housing associations, or registered providers of social housing.

The Common Housing Register is the waiting list for social housing in North Hertfordshire. You can apply to join if you are aged 16 years or over.

Apply for housing at Home4U: <https://www.home4u.org.uk/>

Support from settle

Sometimes we just need a bit of help. Someone who can listen and offer us practical help and suggestions. If you're struggling to cope we can help. If you need professional help that we can't offer, we'll always direct you to organisations that can.

Visit: <https://www.settlegroup.org.uk/support-from-settle/>



Specialist Adolescent Service Hertfordshire (SASH)

The service provides support to:

- young people aged 11 to 17 in families at risk of breakdown or on the edge of care
- young people who go missing from home or those that are at risk of, or subject to, child exploitation, including gangs and county lines
- young people in the Youth Justice system to prevent offending and re-offending; and to support victims of youth crime and their communities
- young people aged 16 to 17 years old who are homeless

To speak to someone in the team, call 0300 123 4043.



SUPPORT AT HOME

CAPA FIRST RESPONSE



We support families and professionals impacted by child or adolescent on parent abuse.

Are you experiencing harmful and/or aggressive behaviours from your child? We are here to support you, and help improve relationships within your family. We offer 1 to 1 sessions with our trained, specialist practitioners. We'll help to create an action plan so that everyone feels safe at home. We are a fully inclusive, offering our services to all, regardless of location.

Every child, and every family is different, and we tailor our support to suit each individual situation.

What does it cost to access your services?

We offer Free or low-cost sessions, – to ensure everyone can access our services. All our family services are offered on a 'pay what you can' basis, and if a family cannot afford to pay we can still help them thanks to funding primarily from The National Lottery Community Fund.

How do I book a session with Capa First Response?

Please email us at info@CapaFirstResponse.org with a short summary of what your family is experiencing and we will be in touch. Usually we respond within 3 working days with advice on next steps and current waiting times.

Are sessions on line? What platform do you use?

We can be flexible to meet your needs. We primarily use Zoom for video calls, however we also can use whatsapp video call, or even teams, as well as calling you on the phone. We want to make it as easy for you and your family as possible!

<https://capafirstresponse.org/>

[Click here to return to the contents page](#)



SUPPORT AT HOME

HERTS CYP MENTAL HEALTH DIRECTORY

Hertfordshire Children and Young People's Mental Health Service Directory

The services below provide a combination of early intervention and more specialist support for children and young people's mental health. Click the service name to be redirected to more information.

ARC Services 🗣️👤🟡	NHS Talking Therapies 🗣️🟢
Chathealth 0-5 🌐🟢🟢	PALMS 🗣️👤🟡
Chathealth 11-19 🌐🟢🟢	Rephael House Counselling 🌐🗣️👤🟢🟢
Children's Crisis Assessment and Treatment Team 🗣️👤🟡	Safe Space 🗣️👤🟢
Children's Wellbeing Practitioners 🗣️👤🟢🟢	School Nurses and Duty Line 🗣️🗣️👤🟡🟢
CHUMS Bereavement Support 🗣️👤🟢	Signpost 🌐🗣️👤🟢🟢
Educational Psychologists 🗣️🟢	Single Point Access (SPA) 🌐🗣️🟢🟢🟡🟢
Families First 🗣️👤🟢	Specialist CAMHS 🗣️👤🟡🟢
First Steps ED 🌐🗣️🟢	Spectrum Family and Young People's Service 🌐🗣️👤🟢
Health for Kids 🌐🟡	Step 2 🗣️👤🟢
Health for Teens 🌐🟡	The Sandbox 🌐🟡🟢🟢
Herts Haven Cafés 🗣️🟡🟢🟢🟡	Togetherall 🌐🟡
Just Talk 🌐🟡	WithYOUth 🌐🗣️👤🟡🟢🟢
Just Talk Ambassador Scheme 🌐🗣️🟡	YCT Counselling 🌐🗣️👤🟢🟢
Lumi Nova 🌐🟡🟢🟢	Youth Talk Counselling 🌐🗣️👤🟢🟢
Mental Health Support Teams in Schools (MHSTs) 🗣️👤🟢🟢	Young Minds Parent Helpline 🗣️🟢
NESSie Parenting 🌐🗣️👤🟡🟢🟢	

🗣️ Telephone service

🌐 Online/virtual service

👤 Face to face service

👤 Referral required

- Reaching developmental and emotional milestones, learning healthy social skills and how to cope when there are problems. Mentally healthy children have a positive quality of life and can function well at home, in school, and in their communities.
- Difficulties with normal life problems, poor self confidence, low self esteem, low aspirations, difficult family relationships, poor peer relationships, experimental substance misuse, bereavement, poor concentration, difficulty sustaining relationships, some worries, low mood.
- Many worries, high levels of anxiety, persistent low mood, body image concerns, behaviour puts peers at risk, persistent or high risk substance misuse, risk taking behaviour, unable to display empathy, difficulty coping with anger or frustration, bereavement by suicide/suspected suicide, withdrawn or unwilling to engage, disruptive or challenging behaviour, unable to maintain peer relationships (bullying, bullied or aggression etc).
- Mental health problems which are:
 - Persistent, complex and severe
 - Present in all environments (home, school, with peers)
 - Beyond a normal response to life's problems
- Deliberate self harm requiring hospital treatment, suicidal ideation with imminent plan and means, psychotic episode (hearing unexpected voices, unrealistic or racing thoughts not related to physical or substance misuse), intentional overdosing, persistent inability to engage with services or support offered, risk taking behaviour with no underlying mental health disorder, unresponsive to treatment and continuing to decline.

[Click here to return to the contents page](#)



SUPPORT AT HOME

STAND-BY-ME



We work with bereaved children, young people (aged 18 and under) and their families in NORTH HERTS and STEVENAGE.

The Groupwork Programme

Run over 7 sessions our therapeutic groupwork programme is staffed by a dedicated team of highly trained volunteers who make sure that every child, young person, and their parent/carers feels safe and supported throughout their time with us. The group provides a safe space to share their experiences and emotions with others who understand how it feels when someone close to them dies, allowing them to see that they are not alone. Our groups for both the children and young people and their parent/carers are run concurrently and throughout the 7 sessions will join for certain activities.

Young Ambassadors Programme

The programme aims to give those young people, whom have attended a group and who would like the opportunity, the chance to work with the Stand-by-me team. Their role is to share their experiences with other bereaved young people and their families and show that it is possible to look forward to a more positive future – even when things may seem at their worst.

As a group they raise awareness of the needs of bereaved children, get involved with fundraising and events, as well as learning some new skills such as event organising, marketing, fundraising, and public speaking.

Post-Group Counselling for Parents/Carers

Bereavement affects all of us at some stage in our lives and grief can turn your world upside down. Family members may experience different challenges in many aspects of life whilst grieving the reality of loss and continuing with the process of living.

As a parent/carer of a child who has attended our 7-week group programme we are able to offer you a safe, supportive place to talk in confidence about emotional issues. Your counsellor will listen without judgement and will focus on you and your world. You will not be directed in any specific way, but will be offered an opportunity, with your counsellor alongside, to look within yourself as you reflect on what you are going through.

Your challenges are unique to you. Whatever you choose to talk about will be received with empathy and respect.

Telephone helpline

To help families at this difficult time, we offer a telephone helpline, 07469 255139, for parents, carers, and professionals.

Our trained Stand-by-me Advisors can offer advice and information on how to handle difficult conversations and hopefully relieve at least a little of the worry and stress that these conversations can cause.

<https://stand-by-me.org.uk/>

[Click here to return to the contents page](#)



SUPPORT AT HOME

SAFE SPACE



Safe Space offers children and young people across Hertfordshire a creative, confidential and safe space to explore any issues affecting their everyday lives. The service provides therapeutic support to children and young people via counselling and arts therapy (art, play and drama therapy), as well as mentoring for secondary aged young people.

Counselling and arts therapy is available for 5-19 year olds (up to 21 years with care leavers), with sessions typically taking place within school or college. If the child/young person is not attending an educational establishment, arrangements can be made where possible to see them in an alternative, appropriate space or via online support.

There is a cost attached to these provisions. Depending on the circumstances of the child or young person, funding may be available to support the work.

Mentoring involves the young person meeting with a volunteer mentor for an hour a week in a public place such as a coffee shop or engaging in a social activity, where they can talk and get advice on whatever they would like support with. Typically a mentoring relationship lasts for 6 months. Mentoring is available for *11 – 19 year olds (up to 21 for care leavers and 25 for LDD). * young person aged 11 must be in secondary school.

More detail on the provisions available and information on how to make a referral can be found here: [Counselling in schools and mentoring | Hertfordshire County Council](#).

Or alternatively you can contact the service via safespacemailbox@hertfordshire.gov.uk or 01992 588796.

[Click here to return to the contents page](#)



SUPPORT AT HOME JUST TALK



About us

Just Talk is a multi-agency programme, steered by young people.

It is a collaborative campaign designed to promote the mental health and wellbeing of children and young people (CYP) in Hertfordshire. Through co-production with CYP and other partners, Just Talk's vision is to create a county in which all young people recognise that it's ok to not be ok, feel comfortable and confident in talking about mental health, have tools for looking after their emotional wellbeing, and know how to access support when it's needed.

Just Talk's Mission:

To raise awareness of mental health in an equitable way for boys and girls aged 8 - 24

To raise awareness of self-help techniques and support agencies available to children, young people and parents/carers within Hertfordshire

To increase consistency of mental health language and messages across the mental health system.

To reduce the stigma associated with talking about mental health/illness.

To equip schools and other agencies with the tools needed to actively promote mental health and emotional wellbeing.

www.justtalkherts.org/just-talk-herts.aspx

[Click here to return to
the contents page](#)



SUPPORT AT HOME

THE LIVING ROOM



What we do

At The Living Room we provide free, facilitated group therapy, using psycho-dynamic, psycho-therapeutic, CBT, person-centred approaches. We support the 12-step programme and actively encourage people accessing our service to attend 12-step fellowship groups alongside our treatment programme.

- Registered charity from 2000
- Supporting Hertfordshire adult residents committed to abstaining from their addiction
- All addictions supported: drugs, alcohol and behavioural
- Additional specialist groups for Disordered Eating and Drugs
- Family and Carers weekly, facilitated, peer support group
- Professionally trained counsellors with lived experience (Level 3+)
- Daytime services which are free and non-time-limited
- Three location-based hubs in Stevenage, St Albans, Watford
- Delivering Families Living in Recovery (FLiR) project in partnership with Relate and Family Lives
- We have supported over 7000 people to full recovery over 24 years
- Semi-anonymised reporting to National Drug Treatment Monitoring Service NDTMS
- Monitoring tools used: Recovery Wheel (inc.NHS PHQ-9 Depression Scale, NHS GAD-7 Anxiety Scale), TOP form, questionnaires, client stories and evaluations.

We are here for you on your abstinence recovery journey. You can make an appointment by phone or online. Our free, daily group therapy sessions take place at our hubs in Stevenage, St Albans and Watford.

We are taking referrals from adults that live in Hertfordshire, so take your first step towards recovery with us today, by using our enquiry form. Our team will respond within three working days.

You can also find helpful support from other services on our referrals page.

If you need to speak with someone directly, you can call us between 9am - 4:30pm (Mon-Fri) on 0300 365 0304.

www.livingroomherts.org

[Click here to return to the contents page](#)



SUPPORT AT HOME

HERTFORDSHIRE MIND NETWORK



Welcome to Hertfordshire Mind Network

We work across Hertfordshire to support positive mental health and wellbeing. We provide a diverse range of services from our eight Wellbeing Centres and other venues across the county. Funded locally, our services are available to all residents in Hertfordshire aged 18+ and we offer dedicated services for 5-18 year olds.

Our aim is to make sure that no-one has to face a mental health problem alone.

We are a local Mind, affiliated to national Mind, the leading mental health charity in England and Wales. This means we are an independent charity responsible for raising our own funds through contracts, grants and fundraising.

Services for Adults

We have a wide range of services across the county. To make it easier to find the services that might be right for you, please see the categories here for further details, including where they are located and how you can access them. Please use the filter drop down menus to search for services that are available in your area of the county.

Please get in touch with us on 02037 273600 if you would like more information about our service provision.

Services for young people

Hertfordshire Mind Network has a dedicated Children and Young People's website providing information about our services and training.

To find out more about our Children and Young People's provision, please click here.

www.hertsmindnetwork.org

[Click here to return to the contents page](#)



SUPPORT AT HOME

SAFER PLACES



We're a helping hand for people on their journey to recovery, resilience and independence after experiencing domestic or sexual abuse.

Everyone deserves a life free from fear and abuse

The support we offer:

We will guide and support you every step of the way.

The support we offer is confidential, free, and individually tailored. We believe in a person-led approach to recovery.

This includes:

- A safe place to stay
- Improving your safety
- Emotional support, therapy & counselling
- Support reporting abuse (if you choose to)
- Legal, financial & housing advice & advocacy
- Stalking support service
- Family fun sessions, trips & activities
- Children's support services
- Immigration support & No Recourse to Public Funds (NRPF)

Help in a crisis

Always call 999 if you or your family are in immediate danger

The caller will need to be able to safely provide their full name, address and telephone number.

Make a referral

If you are not in immediate danger and would like to talk to one of our team members, call us 24/7 on 03301 or complete the [referral form](#).

www.saferplaces.co.uk

[Click here to return to the contents page](#)



SUPPORT AT HOME

MEDIATION HERTFORDSHIRE



Mediation Hertfordshire is a not for profit organisation offering mediation and conflict resolution services to those experiencing disputes in the community, the family, in schools and in the workplace. We also offer training about conflict resolution.

What is Mediation?

Mediation is a form of dispute resolution where communication between the parties to a dispute is supported by a third party, the mediator, with a view to helping the parties reach an agreement to resolve their differences.

How does it work?

Many disputes arise because people make assumptions about what someone else is thinking or why they are behaving in a certain way. Mediation enables both parties to explain their experience of the dispute to each other in a safe and supported environment. Mediation enables all parties to feel heard and the Mediator will help the parties to find their own solutions to the dispute.

What is the Process?

At Mediation Hertfordshire, once we receive a referral form and we have confirmed that we have funding to help you, we will contact both parties and seek to arrange initial and individual meetings. In the unlikely event that there is no funding available we will contact you to advise of our fixed fee mediation service. At least 95% of cases that we undertake are fully funded.

Mediation Hertfordshire operates Countywide and mediations take place at a variety of neutral venues across Hertfordshire that are accessible and convenient for the parties involved.

The details for our administrative hub and our address for postal communications is Mediation Hertfordshire, 3 Halsey Drive, Hemel Hempstead Hertfordshire HP1 3SE.

Telephone 01442 268044 and 01442 243402. Mobile number 07925 512587 (text anytime and we will reply during office hours).

Email: help@mediationherts.org.uk

www.mediationherts.org.uk

[Click here to return to the contents page](#)



SUPPORT AT HOME

RISE



Child to Parent Violence

The 'Positive Relationships' Child to Parent Violence Programme is an evidence-influenced, Non-violent Resistance (NVR) intervention that aims to enhance the protection and safety of all family members.

Child to parent violence is defined as a harmful act carried out by a child with the intention to cause physical, psychological, or financial pain or to exert power and control over a parent. In other words, a child or adolescent's behaviour should be considered violent and abusive if family members feel controlled, intimidated or threatened by it.

The programme consists of 10 sessions for the parent(s) and 6 sessions for the young person. The parent(s) and young people attend the sessions separately, with the possibility of a con-joint session at the end is deemed to be helpful by both the young person and the parent(s). Ideally, the sessions are delivered in parallel. Both parents are encouraged to attend whenever possible, even if they are living separately.

The focus on therapeutic support and applying an NVR approach encourages participants to break unhelpful patterns and to build on the resources within the family and wider networks in reinforcing a commitment to non-violence.

The aims of the Positive Relationships programme are to:

- To end incidents of abusive behaviour by the child towards their parent;
- To increase respectful communication and appropriate parent-child boundaries in the family;
- To increase family resilience through building family support networks and expanding on family strengths.

For further details on the Positive Relationships programme, please contact us at info@risemutual.org.

<https://risemutual.org>

[Click here to return to the contents page](#)

